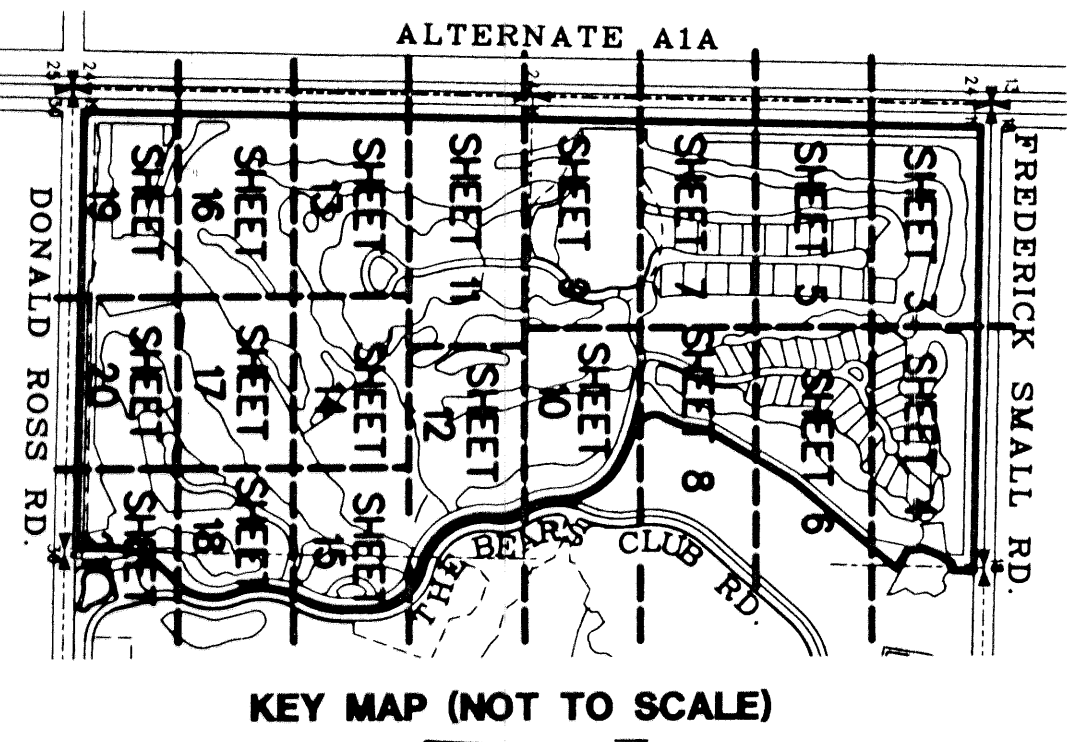
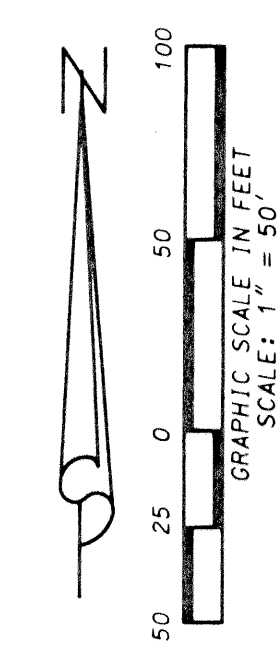


RITZ-CARLTON GOLF CLUB & SPA, JUPITER, A P.U.D.

SITUATE IN SECTION 19, TOWNSHIP 41 SOUTH, RANGE 43 EAST, TOWN OF JUPITER, PALM BEACH COUNTY, FLORIDA
DECEMBER, 2001
SHEET 13 OF 22



MATCH LINE SEE SHEET 11

MATCH LINE SEE SHEET 14

WEST LINE OF THE SOUTHWEST QUARTER OF SECTION 19/41/743
501° 23'06" W, 2655.61'
ALTERNATE A1A (S.R. 811)
(A 160' RIGHT-OF-WAY)
(O.R.B. 4/221, P.C. 1591)
13° P.P.E.
NO1° 20'00" E, 5191.36'
5 L.A.E.
NO1° 20'00" E, 2027.46'

TRACT "N" BUFFER TRACT

TRACT "G-2" GOLF COURSE TRACT

TRACT "P-8" UPLAND PRESERVATION TRACT

TRACT "G-5" GOLF COURSE TRACT

TRACT "W-4" WATER MANAGEMENT TRACT

MATCH LINE SEE SHEET 14

TRACT "G-2" GOLF COURSE TRACT

MATCH LINE SEE SHEET 16

MATCH LINE SEE SHEET 16

MATCH LINE SEE SHEET 17

LIDBERG LAND SURVEYING, INC.
675 West Indiantown Road, Suite 200, Jupiter, Florida 33458 TEL. 561-746-8454

CAD: K:\UST \ 194143 \ RITZ \ 1690306 \ SHEET13.DGN			
REF: K:\UST \ 194143 \ RITZ \ 1690306 \ 1690306.DGN			
FLD.	FB.	PG.	JOB 00-169-306
OFF. R.W.			DATE 04/28/01
CKD. D.C.L.	SHEET 13	OF 22	DWG. D00-169P